

heavy duty edition 2

The SLX Filter

The SLX range is manufactured with a liner employing special resins which form a watertight, anti-corrosive barrier, giving a high chemical resistance to chemicals. Also suitable for salt water pools.

An outer fibre-glass shell is then applied to the liner, using the bobbin winding process: this gives the finished tank its final working and test ratings.

The standard filter is manufactured with a polyester shell. For ozone systems a vinylester shell is available upon request.

Includes pressure gauge panel.

Working pressure:
2.5kg/cm² / 35.56 psi / 2.45 bar

Test pressure:
3.75kg/cm² / 53.3 psi / 3.68 bar

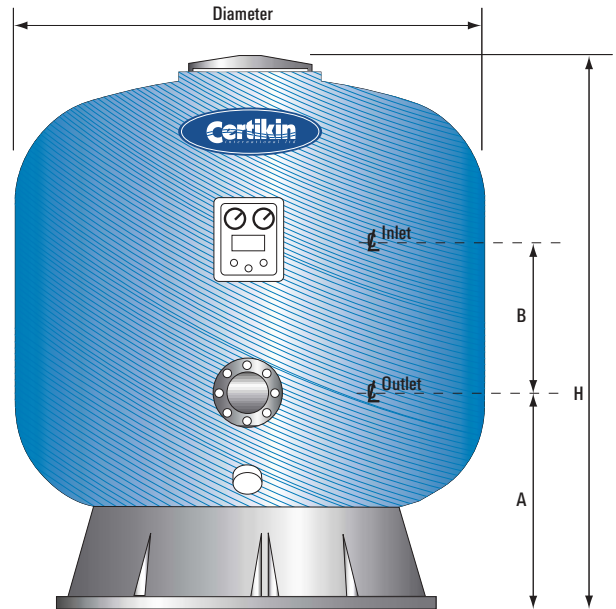
Special working pressure:
4kg/cm² available on request

Maximum temperature:
50°C

Available Options:
1 metre or 1.2metre bed depth
Media sight glass
Sand service hatch
Plate and nozzle underdrain system available

slx filters

bobbin wound commercial sand filter



Standard Features - SLX

- Polyester shell linings
- Ø50mm Polypropylene arm collectors
- PVC distribution pipe work
- Automatic air relief valve
- Bolt down lid Ø400mm
- Sand and water drain port
- Complete with pressure gauge panel

Dimensions SLX Filter

1 Metre Bed Depth

Filter Ref / Dia	A mm	B mm	H mm	W kg	Sand kg	Gravel kg	Area m ²
SLX1050	740	300	1640	120	1050	300	0.86
SLX1200	736	300	1740	155	1350	350	1.13
SLX1400	764	400	1749	175	1875	500	1.54
SLX1600	815	400	1833	235	2225	750	2.01
SLX1800	842	400	1867	270	2700	750	2.54
SLX2000	936	400	2042	295	3825	1200	3.14
SLX2350	1099	400	2336	530	5250	2000	4.34
SLX2500	1141	400	2398	-	5925	2300	4.90
SLX3000	1380	450	2862	-	8550	3300	7.07

W = shipping weight

11-30m³/h/m² Filtration rate
2.4 Metre Head Loss, Filter Media & Valve Battery

Model Code	Ø mm	Conn mm	Flow m ³ /hr
SLX1050-30M	1050	75	25
SLX1200-30M	1200	75	33
SLX1400-30M	1400	90	46
SLX1600-30M	1600	110	60
SLX1800-30M	1800	110	76
SLX2000-30M	2000	125	94
SLX2350-30M	2350	140	130
SLX2500-30M	2500	160	150
SLX3000-30M	3000	200	212

30-40m³/h/m² Filtration rate
4.0 Metre Head Loss, Filter Media & Valve Battery

Model Code	Ø mm	Conn mm	Flow m ³ /hr
SLX1050-40M	1050	75	34
SLX1200-40M	1200	90	45
SLX1400-40M	1400	110	61
SLX1600-40M	1600	110	80
SLX1800-40M	1800	125	101
SLX2000-40M	2000	140	125
SLX2350-40M	2350	160	175
SLX2500-40M	2500	200	200
SLX3000-40M	3000	225	282

40-50m³/h/m² Filtration rate
6.2 Metre Head Loss, Filter Media & Valve Battery

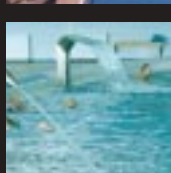
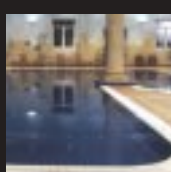
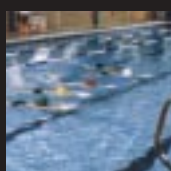
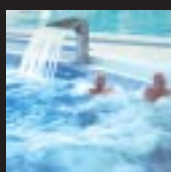
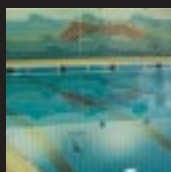
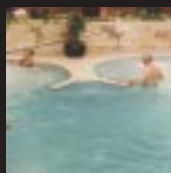
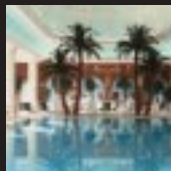
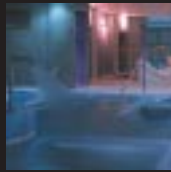
Model Code	Ø mm	Conn mm	Flow m ³ /hr
SLX1050-50M	1050	90	43
SLX1200-50M	1200	90	56.5
SLX1400-50M	1400	110	77
SLX1600-50M	1600	125	100.5
SLX1800-50M	1800	140	127
SLX2000-50M	2000	160	157
SLX2350-50M	2350	200	217
SLX2500-50M	2500	225	245
SLX3000-50M	3000	250	353.50

Options For SLX Filter

Code	Description
SPX006N	Filter pressure gauge panel 0-4 bar
SLXI.5ARV	Automatic air relief valve 1.5" BSP connection
SLXSG	SLX filter media sight glass Ø90mm
SLXSH-400	SLX filter service hatch Ø400mm

Air Scourers - see page 20-21

heavyduty



Certikin
international ltd

Certikin International
Witan Park,
Avenue 2,
Station Lane Industrial Estate, Witney,
Oxon OX28 4FJ

UK Tel: +44 (0) 1993 778855
UK Fax: +44 (0) 1993 778869
Export Tel: +44(0) 1993 700744
Export Fax: +44 (0) 1993 708499
E-mail: info@certikin.co.uk
Web: <http://www.certikin.co.uk>