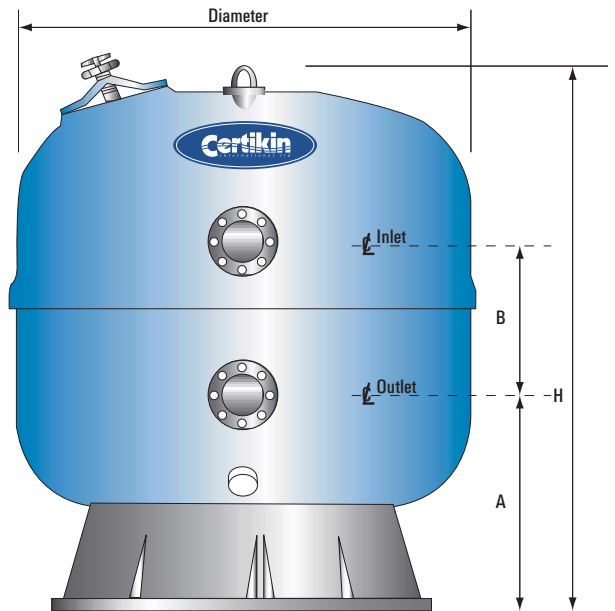


heavy duty edition 2

slc filters

laminated polyester commercial sand filter



The SLC Filter

The SLC range of filters are manufactured from multiple layers of GRP and are available with 1 metre or 1.2 metre bed depth.



Working pressure:

2.55kg/cm² / 36.26 psi / 2.5 bar



Test pressure:

4.08kg/cm² / 58.01 psi / 4.0 bar



Available Options:

- 1 metre or 1.2metre bed depth
- Media sight glass
- Plate and nozzle underdrain
- Sand service hatch
- Horizontal filters
- 4 Bar working pressure

Dimensions & Media Quantities For SLC Filters

Diameter Ø	Depth Metres	A mm	B mm	H mm	Sand kg	Gravel kg	Nett Weight
1230	1.0	700	600	1800	1375	300	226kg
	1.2	700	700	2000	1675	300	241kg
1430	1.0	750	600	1850	1875	500	175kg
	1.2	750	700	2000	2300	500	175kg
1630	1.0	800	600	2050	2450	750	245kg
	1.2	800	700	2250	3000	750	245kg
1880	1.0	700	700	2100	3100	850	350kg
	1.2	700	700	2250	3800	850	350kg
2030	1.2	750	700	2300	4600	1150	415kg
2350	1.2	750	700	2300	6300	2600	752kg

Standard Features - SLC

- 430 x 550mm top access manhole
- Total vacuum lid with twin yoke McNeil hatch
- High gloss laminated finish for easy cleaning
- Manual air relief valve
- Ø50mm heavy duty laterals
- Ø50mm sand and water drainport
- Lifting eye

Design improvements may invalidate the dimensions on the SLX and SLC filters. Latest drawings are available on request



SLC Filter Specifications

Model Code	Bed Depth	Max Filtration Rate m ³ /m ² h	Max Flow Rate m ³ /h	Surface Area m ²	Conn mm
SLC1200 SLC1200/D	1.0M 1.2M	50	57	1.13	90
SLC1400 SLC1400/D	1.0M 1.2M	50	77	1.54	110
SLC1600 SLC1600/D	1.0M 1.2M	50	100	2.01	110
SLC1850 SLC1850/D	1.0M 1.2M	50	135	2.70	160
SLC2000/D	1.2M	50	157	3.14	160
SLC2350/D	1.2M	50	217	4.34	160

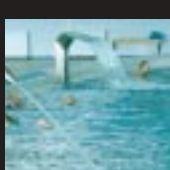
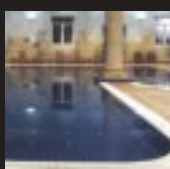
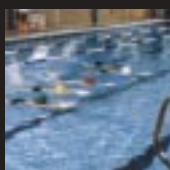
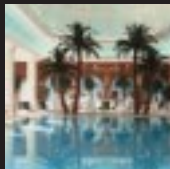
Filter Media

Code	Description
FM1630/25	Sand 0.5-0.7mm 1 x 25kg bag
FM6816/25	Pea gravel per 6.0mm 1 x 25kg bag
ZC30	Zeoclere 30 filter media per 25kg bag

Options For SLC Filter

Code	Description
SPX006N	Filter pressure gauge panel 0-4 bar
SPLCSG	Ø100mm Filter media sight glass
SPLCSH	430 x 550mm SLC filter service hatch

heavyduty



Certikin
international ltd

Certikin International
Witan Park,
Avenue 2,
Station Lane Industrial Estate, Witney,
Oxon OX28 4FJ

UK Tel: +44 (0) 1993 778855
UK Fax: +44 (0) 1993 778869
Export Tel: +44(0) 1993 700744
Export Fax: +44 (0) 1993 708499
E-mail: info@certikin.co.uk
Web: <http://www.certikin.co.uk>